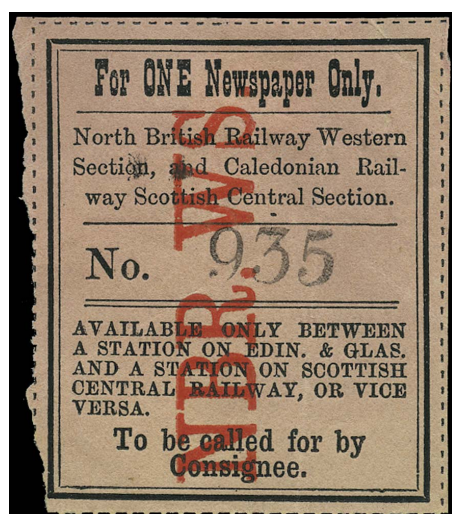




STANLEY  
GIBBONS  
THE HOME OF STAMP COLLECTING

## Railway Newspaper and Parcel Labels

---

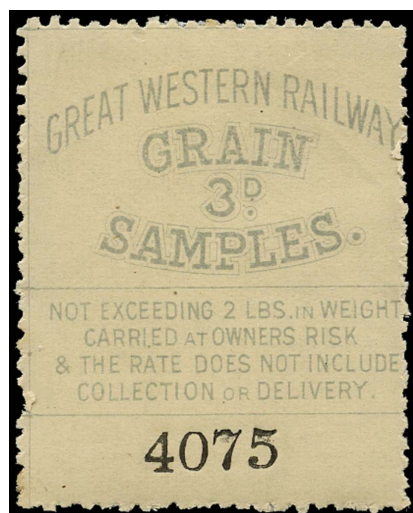


### GB 1864 Railway - North British Railway, Western Section

Stock Code: P201006582

C.1868 North British Railway, Western Section Newspaper label (Design 1b). Very fine unused example, endorsed "For ONE newspaper only/ North British Railway Western Section and Caledonian Railway Scottish Central Section" printed in black on rose rouletted paper, overprinted vertically "NBR. W.S." in red with control number "935" in black. Scarce. Unrecorded by Ewen.

£95.00



### GB 1870 Railway - Great Western Railway

Stock Code: P201006848

1870 Great Western Railway Grain Samples (Perf 12). Superb unused o.g. example printed in grey on white, gummed, perforated paper with control number "4075" in black at foot. Ewen #71.

£150.00



## GB 1902 Railway - London, Brighton & South Coast Railway

Stock Code: P201006677

C.1902 4d London, Brighton & South Coast Railway Newspaper label (Perf 10). Very fine unused o.g. top marginal example printed in blue on white perforated paper with control number "9616" in black at foot. Ewen #6.

£75.00

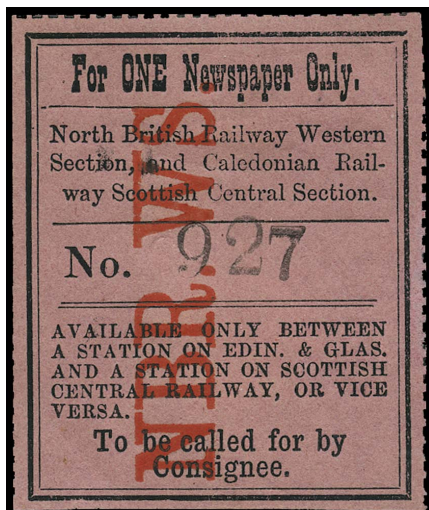


## GB 1855 Railway - Midland Railway

Stock Code: P201006783

C.1855 2d Midland Railway Newspaper Parcel label (Perf 12½). Fine unused example, printed in orange on white paper with control number "632311" at left small thin at top right nevertheless a presentable and early newspaper parcel label. Ewen #2.

£90.00



## GB 1864 Railway - North British Railway, Western Section

Stock Code: P201006583

C.1868 North British Railway, Western Section Newspaper label (Design 1b). Very fine unused o.g. example, endorsed "For ONE newspaper only/ North British Railway Western Section and Caledonian Railway Scottish Central Section" printed in black on rose rouletted paper, overprinted vertically "NBR. W.S." in red with control number "927" in black. Scarce. Unrecorded by Ewen.

£150.00



## GB 1903 Railway - North Eastern Railway

Stock Code: P201006878

C.1903 24lb (6d) North Eastern Railway Newspaper Parcel label (Die III, Perf 12). Superb unused o.g. example printed in black on thin white paper with background of wavy lines running upwards, overprinted "LOCAL" diagonally in bright red and showing control number "21996" at left. Scarce so fine. Ewen #27.

£100.00



## GB 1867 Railway - London & North-Western Railway

Stock Code: P201006689

C.1867 1d London & North-Western Railway Newspaper Parcel label. Very fine unused o.g. example printed in green on white, rouletted paper with serial letter "H" at top left and black control number "927597". Ewen #23g.

£70.00



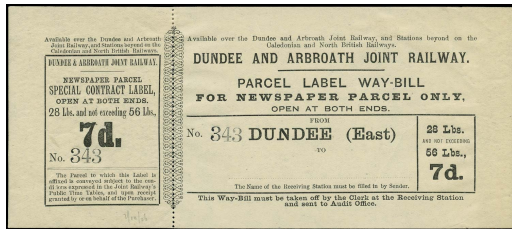
## GB 1855 Railway - Midland Railway

Stock Code: P201006784

C.1855 3d Midland Railway Newspaper Parcel label (Perf 12½). Fine unused example, printed in orange on white paper with control number "62026" at left, some minor toning nevertheless a presentable and early newspaper parcel label. Ewen #3.

£95.00





## GB 1880 Railway - Dundee & Arbroath Joint Railway

Stock Code: P201006595

C.1880 7d Dundee & Arbroath Joint Railway Newspaper Parcel label/way bill. Superb unused o.g. se-tenant newspaper label/way bill, endorsed "28lbs and not exceeding 56lbs" printed in black on white, paper with control number "343" in black. Very scarce in this condition. Ewen #7.

£175.00



## GB 1905 Railway - North Eastern Railway

Stock Code: P201006888

C.1905 5d North Eastern Railway Parcel label (Perf 12). Superb unused o.g. example printed in red on rose perforated paper with control number "111631" in black at foot. Ewen #75.

£75.00



## GB 1867 Railway - London & North-Western Railway

Stock Code: P201006690

C.1867 2d London & North-Western Railway Newspaper Parcel label. Very fine unused o.g. example printed in green on white, rouletted paper with serial letter "F" at top left and black control number "746160". Ewen #24e.

£75.00

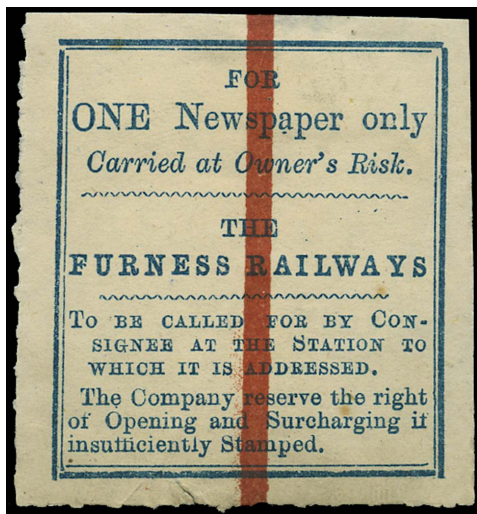


## GB 1855 Railway - Midland Railway

Stock Code: P201006786

C.1855 5d Midland Railway Newspaper Parcel label (Perf 12½). Very fine unused o.g. example, printed in orange on white paper with control number "7476" at left, small thin at top nevertheless a rare early label. Ewen #4.

£175.00



## GB 1865 Railway - Furness Railway

Stock Code: P201006616

C.1865 Furness Railways Newspaper label (Rouletted). Very fine unused example, printed in blue on white rouletted paper with a vertical red bar overprint indicating "One Newspaper" only. Scarce. Ewen #15.

£80.00



## GB 1867 Railway - London & North-Western Railway

Stock Code: P201006693

C.1867 6d London & North-Western Railway Newspaper Parcel label. Very fine unused o.g. example printed in green on white, rouletted paper with serial letter "C" at top left and black control number "152355". Ewen #27b.

£75.00





## GB 1883 Railway - Cornwall Railway

Stock Code: P201006254

C.1883 2d Cornwall Railway Newspaper Frank label (Perf. 12). Fine used example printed in blue on white paper, manuscript ink cancellation. With the usual peripheral faults and creasing seen on these rare early Cornwall Railway issues. Ewen #3.

£275.00



## GB 1855 Railway - Midland Railway

Stock Code: P201006788

C.1855 4d Midland Railway Newspaper Parcel or Newsletter label (Perf 12½). Very fine unused o.g. example, printed in orange on white paper with control number "24656" at left, rare. Ewen #4.

£200.00



## GB 1855 Railway - London & South-Western Railway

Stock Code: P201006661

C.1855 1d London & South-Western Railway Newspaper Ticket. Very fine unused imperforate example printed in grey on blue paper. A wonderful example of this early newspaper ticket, scarce so fine. Ewen #1.

£75.00



## GB 1885 Railway - London & North-Western Railway

Stock Code: P201006720

C.1885 2d London & North-Western Railway Company News Correspondence label (Die III, Perf 11½). Very fine unused o.g. example, printed in red on white paper with 2d on a solid background framed with white bars and dots removed before and after "Railway Company" (Die III), with black control number "501817" in black at foot. Scarce so fine. Ewen #37. Accompanied by a used 3d Die II and a 4d Die III Ewene #38-39.

£75.00



## GB 1895 Railway - Cornwall Railway

Stock Code: P201006265

C.1895 ½d, 1d & 2d Corris Railway Company Newspaper parcel proofs (Perf 11). Very fine unused o.g. set of three proofs printed in black on pink, perforated paper without control numbers. Scarce proof set. Ewen #4-5.

£175.00



## GB 1895 Railway - Midland Railway

Stock Code: P201006801

1895 3d Midland Railway Prepaid Newspaper Parcel label (Perf 11). Very fine unused o.g. example with background of lines slanting down, printed in orange on white, gummed paper with black control number "927241" with serial letter A at left. Ewen #36.

£50.00



## GB 1855 Railway - London & South-Western Railway

Stock Code: P201006662

C.1855 1d London & South-Western Railway Newspaper Ticket. Very fine unused large part o.g. imperforate example printed in grey on blue paper. A wonderful example of this early newspaper ticket, scarce so fine. Ewen #1.

£100.00



## GB 1865 Railway - Caledonian Railway

Stock Code: P201006723

C.1865 Caledonian Railway Newspaper Parcel label (Roulette). Very fine unused example mounted on card printed in black on yellow, rouletted paper. Endorsed "NEWSPAPER PARCEL/ OPEN AT BOTH ENDS/ WEIGHT UNDER 5 LBS" at top with control number "1461" in black below and overprinted "NORTH/ C.R./ FOR PARCELS FROM DUNDEE AND PERTH AND INTERMEDIATE STATIONS AND VICE VERSA" vertically, reading upwards in red. Scarce. Ewen #1.

£150.00



## GB 1906 Railway - Stratford-upon-Avon and Midland Junction

Stock Code: P201006310

1906 ½d & 1d Stratford-upon-Avon and Midland Junction Railway newspaper parcel labels (Perf 11½). Very fine unused part o.g. set of two left hand marginal horizontal pairs printed in red and blue on white, gummed paper with black control numbers at right. Showing marginal endorsements "In sheets of 12" with control numbers for that sheet below. Attractive set.

£140.00



## GB 1895 Railway - Midland Railway

Stock Code: P201006803

1895 4d Midland Railway Prepaid Newspaper Parcel label (Perf 11). Very fine unused o.g. example with background of lines slanting down, printed in orange on white, gummed paper with black control number "497341" with serial letter A at left. Ewen #37.

£60.00



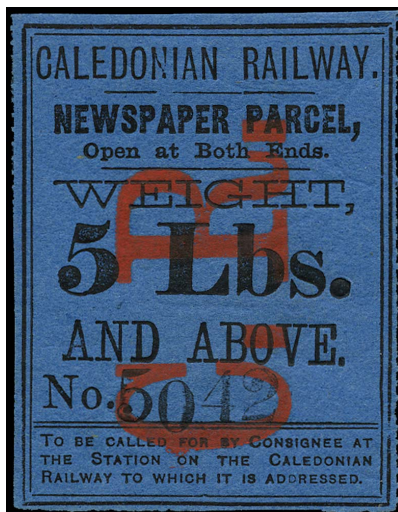


## GB 1868 Railway - London & South-Western Railway

Stock Code: P201006666

C.1868 1d London & South-Western Railway Newspaper label (Perf 10, Die I). Very fine unused o.g. example printed in lilac on white, perforated paper. Attractive. Ewen #17.

£75.00



## GB 1865 Railway - Caledonian Railway

Stock Code: P201006725

C.1865 Caledonian Railway Newspaper Parcel label (Roulette). Very fine unused o.g. example printed in black on blue, rouletted paper. Endorsed "NEWSPAPER PARCEL/ OPEN AT BOTH ENDS/ WEIGHT 5 LBS AND ABOVE" at top with control number "5042" in black below and overprinted "C.R" vertically, reading upwards in red. Scarce. Ewen #6.

£175.00



## GB 1877 Railway - Highland, Sutherland, Duke...

Stock Code: P201006514

C.1877 9d The Highland, Sutherland, Duke of Sutherland and Sutherland & Caithness Railways Joint label (Perf 12½). Very fine unused o.g. example printed in black on green, perforated paper with control number "303" in black at foot. Rare. Ewen #1305.

£275.00



## GB 1895 Railway - Midland Railway

Stock Code: P201006804

1895 5d Midland Railway Prepaid Newspaper Parcel label (Perf 11). Very fine unused o.g. example with background of lines slanting down, printed in orange on white, gummed paper with black control number "48492" with serial letter A at left. Ewen #38.

£75.00

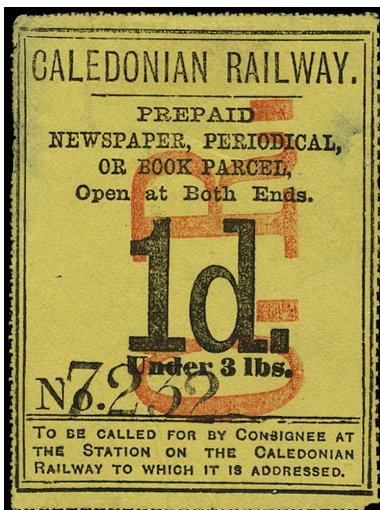


## GB 1868 Railway - London & South-Western Railway

Stock Code: P201006667

C.1868 3d London & South-Western Railway Newspaper label (Perf 11½, Die I). Superb unmounted o.g. top right hand corner marginal example printed in lilac on white, perforated paper. Scarce and attractive. Ewen #19.

£100.00



## GB 1865 Railway - Caledonian Railway

Stock Code: P201006728

C.1865 1d Caledonian Railway Newspaper, Periodical or Book Parcel label (Roulette). Very fine unused example printed in black on yellow, rouletted paper. Endorsed "NEWSPAPER, PERIODICAL or BOOK PARCEL/ OPEN AT BOTH ENDS/ 1d/ UNDER 3 LBS" at top with control number "7232" in black below and overprinted "C.R." vertically reading upwards in red. Scarce. Ewen #15.

£150.00





## GB 1875 Railway - Highland Railway Thurso & Stromness

Stock Code: P201006544

C.1875 0½d The Highland Railway Between Thurso & Stromness Newspaper label (Perf 12½). Very fine unused ½d example printed in black on blue paper, endorsed "Between Thurso & Stromness" with control number "10" in black at foot. Very scarce and attractive with a low control number. Ewen #302.

£150.00



## GB 1870 Railway - Great Western Railway

Stock Code: P201006837

C.1870 10d Great Western Railway Prepaid Newspaper Parcel label (Perf 12½). Superb unused o.g. example printed in red on white perforated paper with control number "2373" in black at foot. A very attractive example of this difficult railway stamp. Ewen #22.

£225.00



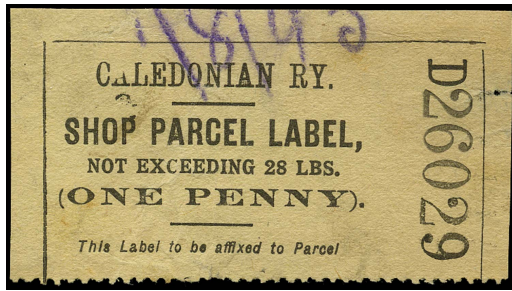
## GB 1872 Railway - London & South-Western Railway

Stock Code: P201006668

C.1872 4d London & South-Western Railway Parcel Post label (Perf 10). Very fine unused o.g. example printed in lilac on white, perforated paper. Scarce. Ewen #47.

£125.00





## GB 1870 Railway - Caledonian Railway

Stock Code: P201006770

C.1870 ½d Caledonian Railway Parcel label (Perf 12). Very fine unused example printed in pale blue on white paper. Endorsed "LABEL FOR PARCEL/ NOT EXCEEDING 28 LBS/ ONE HALF PENNY" with control number "82037" in black at foot. Horizontal crease nevertheless scarce and attractive. Ewen #41a.

£75.00



## GB 1875 Railway - Highland Railway Thurso & Stromness

Stock Code: P201006545

C.1875 1d The Highland Railway Between Thurso & Stromness Newspaper label (Perf 12½). Very fine unused example printed in black on blue paper, endorsed "Between Thurso & Stromness" with control number "00" in black at foot. Very scarce and attractive with the lowest possible control number. Ewen #303.

£150.00



## GB 1869 Railway - Great Western Railway

Stock Code: P201006841

C.1869 2d Great Western Railway Prepaid Provincial Newspaper Parcel label (Perf 12½). Superb unused o.g. example printed in red-brown on white perforated paper with control number "4830" in black at foot. A very attractive example of this difficult railway stamp. Ewen #23.

£110.00



## GB 1872 Railway - London & South-Western Railway

Stock Code: P201006669

C.1872 6d London & South-Western Railway Parcel Post label (Perf 10). Very fine unused o.g. example printed in lilac on white, perforated paper. Scarce. Ewen #48.

£150.00



## GB 1900 Railway - Caledonian Railway

Stock Code: P201006778

C.1900 1/4d Caledonian Railway Newspaper Parcel label (Perf 11). Superb unused o.g. complete sheet of twelve printed in black on red, perforated paper. Endorsed "NEWSPAPER PARCEL LABEL/ OPEN AT BOTH ENDS SINGLE NEWSPAPER" without any control numbers. Light horizontal crease from storage nevertheless a spectacular multiple of this scarce label, rarely seen in this format and a possible proof due to no controls. Ewen #32var.

£350.00

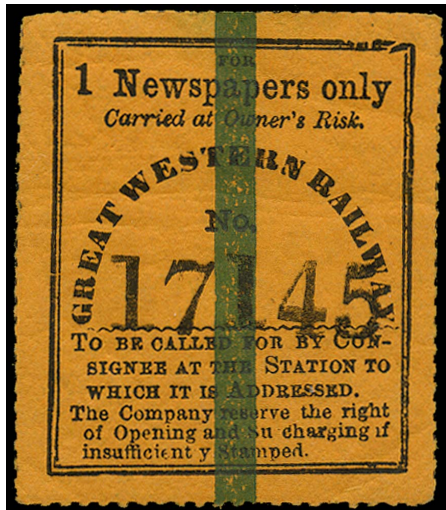


## GB 1900 Railway - Highland, Wick & Lybster Joint Railway

Stock Code: P201006555

C.1900 Highland, Wick & Lybster Joint Railway Newspaper labels (Perf 11). Very fine unused o.g. set of seven printed in black on orange paper with control numbers in black at foot. Scarce set comprising of 1/2d, 3/4d, 1d, 1 1/2d, 2d, 4d & 6 1/2d only missing the rare 9d value. Ewen #401-07.

£375.00



## GB 1868 Railway - Great Western Railway

Stock Code: P201006844

1868 Great Western Railway Newspaper Parcel label (Rouletted, Die I). Very fine unused o.g. example with "Newspapers" in lower case, printed in black on orange-red rouletted paper overprinted with a green vertical bar indicating "One Newspaper" only. Scarce. Ewen #51.

£60.00



## GB 1872 Railway - London & South-Western Railway

Stock Code: P201006670

C.1872 9d London & South-Western Railway Parcel Post label (Perf 10). Very fine unused o.g. example printed in lilac on white, perforated paper. Scarce. Ewen #49.

£150.00



## GB 1870 Railway - Great Western Railway

Stock Code: P201006781

C.1870 1d-1s Great Western Railway Newspaper Parcel label proof sheet (Perf 11). Superb unused sheet of twelve proofs from 1d to 1s (1lb. to 12lbs.) printed in rose on white, perforated paper with the 4d value at top right removed and replaced. Scarce and unusual.

£375.00