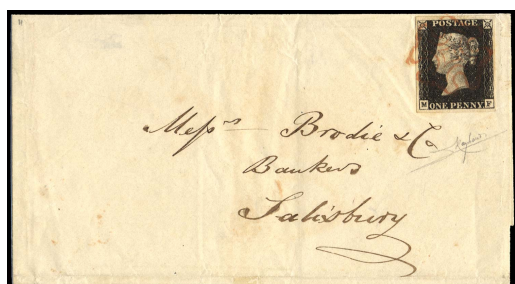




STANLEY  
GIBBONS  
THE HOME OF STAMP COLLECTING

## Penny Black 180th Anniversary

---



### GB 1840 SG2 Pl.4 Penny Black on cover

Stock Code: G1120665X

1840 1d Black Pl.4. Exceptionally fine used large four margin example lettered MF, beautifully tied to a clean cover by a crisp red MC, sent from Weymouth to Salisbury and backstamped accordingly for SE.19.1840. A most attractive provincial 1d black cover.

£700.00



### GB 1840 SG2wi Pl.1b Penny Black with watermark inverted

Stock Code: P11202150

1840 1d Black Pl.1b (Wmk. Inverted). Very fine used four margin example of this scarce watermark variety lettered JK neatly cancelled by a red MC. Also showing clear evidence of re-entry characteristic of this lettering. Spec. AS5b/l.

£2,500.00



## GB 1840 SG2 Pl.5 Penny Black cancelled with a Wotton MC

Stock Code: P11207501

1840 1d Black Pl.5. Very fine used good to large four margin example lettered HE, neatly cancelled by a neat strike of the distinctive Wotton Under Edge MC in black. A superb example of this very rare cancellation. Spec. AS25ue. 1981 BPA cert.

£3,950.00

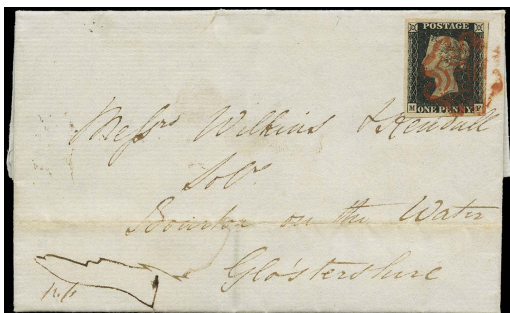


## GB 1840 SG2 Pl.5 Penny Black cancelled with a Manchester "Fishtail" MC

Stock Code: G1564452

1840 1d Black Pl.5. Superb used four margin example lettered RF, neatly cancelled by a perfectly struck Manchester "Fishtail" MC. Very rare so fine. Spec. AS25ub.

£900.00



## GB 1840 SG2 Pl.1b Cover

Stock Code: P190015839

1840 1d Black Pl.1b. Very fine used large four margin example lettered MF showing double letter "M" variety, neatly tied to an entire by a red MC, sent from London to Bourton on the water, backstamped with a London dispatch datestamp for JU.29.1840. Spec. AS5f.

£775.00

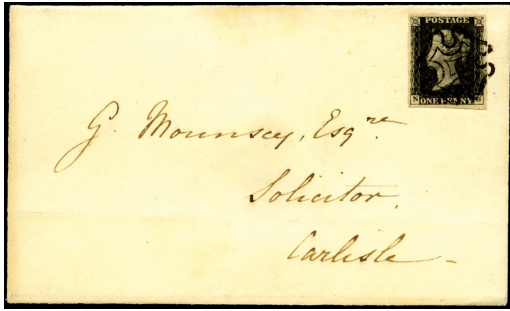


## GB 1840 SG2 Pl.1b Penny Black Cover Farringdon to Swindon

Stock Code: P201001636

1840 1d Black Pl.1b. Very fine used close to large four margin example lettered SF, tied to a wrapper by a crisp red MC and a Farringdon datestamp for NO.27.1840. Sent from Farringdon to Swindon. Spec. AS5.

£750.00



## GB 1840 SG2 Pl.5 Cover

Stock Code: P201003759

1840 1d Black Pl.5. Superb used large four margin example lettered NG, neatly tied to a clean wrapper by a crisp black MC. Sent to Carlisle and backstamped at Keswick for MR.12.1841. A lovely quality 1d black cover.

£950.00

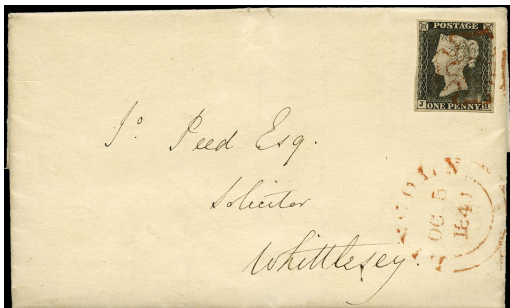


## GB 1840 SG3 Pl.2 Used

Stock Code: P06713348

1840 1d Grey black Pl.2. Very fine used four margin example lettered DH, neatly cancelled by a red MC and a "Poulton Penny Post" handstamp in black. Very scarce. Spec. AS16ya.

£1,200.00

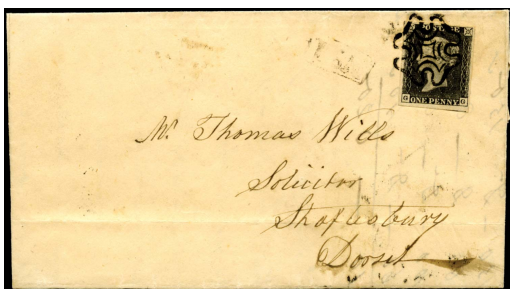


## GB 1840 SG3 Pl.1a Penny Black cover Lincoln to Whittlesey

Stock Code: P201001621

1840 1d Grey-black Pl.1a. Very fine used four margin example lettered JH tied to a clean entire by a red MC, sent from Lincoln to Whittlesey with a matching Lincoln datestamp at lower right for OC.5.1840. A wonderful example showing significant plate wear. Spec. AS3.

£775.00



## GB 1840 SG3 Pl.2 Penny Black

Stock Code: P201003763

1840 1d Grey black Pl.2. Very fine used good to huge four margin example lettered GG without ray flaw, cancelled by a crisp strike of a black MC alongside a faint framed "No.1" receiving house handstamp. Sent from Sturminster Newton to Shaftsbury and backstamped with a Blandford penny post transit datestamp for MR.21.1841. Scarce cancellation on this plate. Spec. AS16f/m.

£950.00