



One Penny Lilac

The Penny Lilac was the result of the Customs and Revenues Act of 1881, which meant a stamp could now be used for both postage and revenue purposes. A ubiquitous stamp of the late Victorian age, allowing for a variety of interesting usages over its 20 year period including OFFICIAL overprints and perfins. Our selection includes some interesting overseas usage on piece and a strong selection of postal history.

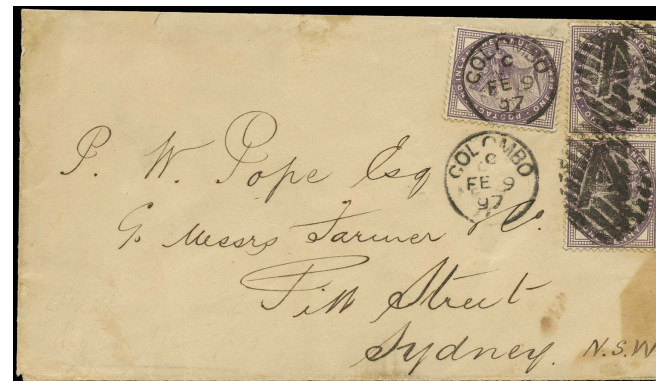


GB 1890 SG172,178,181,207a,211 Used

Stock Code: P201005489

1890 Parcel post. Fine used high value piece bearing two 1d Lilac (SG172, one truncated), 5d 'Jubilee' (SG 207a), 1s 'Jubilee' (SG 211), two 2s6d Lilac (SG 178) and a 5s Crimson (SG 181) all tied by London E.C. hooded circle datestamps for JY.13.1890. Cat. £650+

$474.15*



GB 1897 SG172 Cover Colombo, Ceylon to Sydney, Aus

Stock Code: P190013264

1897 GB overseas usage. Very fine envelope sent from Colombo, Ceylon to Sydney, Australia bearing three 1d lilac (SG 172's) tied by Colombo "A" duplexes for FE.9.1897. Backstamped with a Sydney cds for MR.9.1897. Wonderful overseas usage, scarce.

$304.81*